

Springfield School District

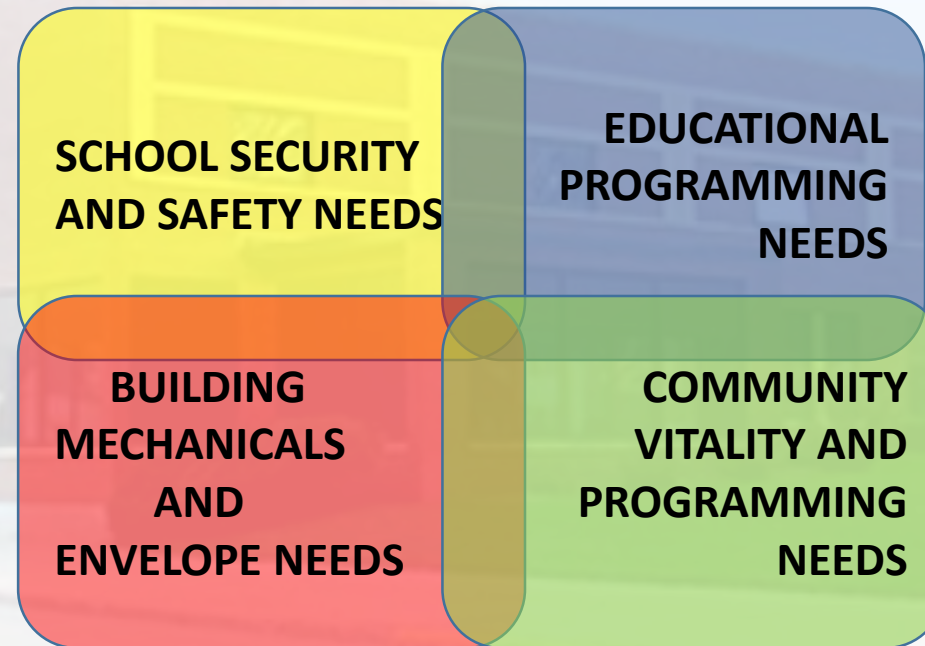


**EDUCATIONAL
PROGRAMMING
NEEDS**

Information on Educational Programming Needs

PHYSICAL PLANT NEEDS

This is how the committee bundled the needs.



- 1) Brainstorm ideas that would be best to address if we were able to address them.
- 2) Report ideas to the group
- 3) Identify the Benefits. What is the deliverable benefit and who benefits?

Educational Programming Needs Brought Forward related to Physical Plant Building Limitations:

EDUCATIONAL PROGRAMMING NEEDS

- *Career and Tech Education programming
- *Health and fitness space limitations
- *General PreK-12 programming to allow for flexible space and personalized learning
- *Locker room/shower conditions are inadequate and not ADA compliant
- *Elementary play and elementary physical activities are greatly limited by green space and recess options
 - *East lawn & Browns Park turn to ice/mud in spring
 - *1926 gymnasium can not hold the amount of elementary students for indoor recess use (200+ bodies)
- *Elementary afterschool youth programs practice later than any other students due to lack of available gym space
- *Space for ECFE, Community Education, and afterschool programming activities is needed
- *Cafeteria size and serving times
- *Music and band classrooms
- *Theatre dressing rooms

The committee reviewed concepts that would provide a more secure and safe environment that meet today's standards for our children, staff, and the community that utilize our school daily.

The next few slides and pictures will help articulate some of these concerns and why they need to be addressed.

Career and Technical ED(CTE) Programming Needs

This is the committee rationale for addressing CTE needs .

**EDUCATIONAL
PROGRAMMING
NEEDS**

Expand and Update the Career and Technical Education (CTE) Lab

There is a growing demand for employees in the construction, manufacturing, engineering, automotive, and design trades in our region. However, our current Career and Technical Education (CTE) lab is too small and in need of expansion to improve safety and support new equipment. Currently, equipment needs to be rotated into the lab for various classes and students are required to work outside (even in the winter months) due to the space shortage. The District would like to renovate and expand this space in order to:

- Expand course offerings to meet student interest and workforce demands
- Incorporate the latest tools and equipment
- Provide more job-like, project-based experiences
- Improve safety

We hope the following slides can articulate the facility needs as well.

Career and Technical Programming Needs

EDUCATIONAL PROGRAMMING NEEDS

Here we have a student working on framing their “goat” shed. A closer look you would see their footprints in the snow drift. That day this student was wearing dress shoes as he had a basketball game that night.



Career and Technical Programming Needs



**EDUCATIONAL
PROGRAMMING
NEEDS**

Here are our students checking their vehicles fluids outside the metals area and on the street since we do not have a “bay” for auto/general mechanics.

Career and Technical Programming Needs



EDUCATIONAL PROGRAMMING NEEDS

Tire balancing and other automotive tools/equipment are in the wood storage area further complicating the use of that space.

Career and Technical Programming Needs

EDUCATIONAL PROGRAMMING NEEDS

This is our metals shop. Students have to clear the floor area to allow for construction trades projects. This space becomes even more complicated and overcrowded when students are building our “Super mileage Car.”



Repurposing the 1926 Gym as a Career and Tech Ed Space.

Examples of what repurposing the gym space could mean for CTE programming that takes place over late fall and winter months.



Auto-shop Example

**EDUCATIONAL
PROGRAMMING
NEEDS**

**NORTHERN CLIMATE HIGH SCHOOLS AND VO-TECHS HAVE
INDOOR SHOP SPACE FOR TEACHING AND LEARNING
THESE TRADES**



Construction Trades
Example

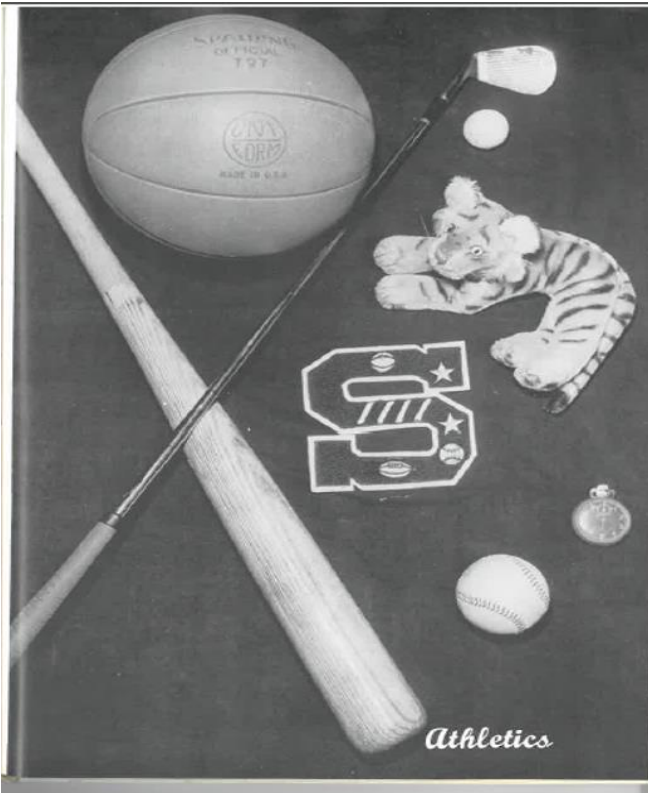
Gym Space Demands and Programming Needs

Gym Space Programming Needs-Then and Now

EDUCATIONAL PROGRAMMING NEEDS

1961 is the last update to our gymnasium programming spaces.

You may be shocked at the disparity that exists between the demand then vs. today.



1961 and 2019 Programming Comparisons

1961
Activity

Year our current competition
gymnasium was built
Level

Football	Varsity
Boys' Basketball	Varsity
Boys' Basketball	B-Squad
Boys' Basketball	8th Grade
Boys' Basketball	7th Grade
Baseball	Varsity
Boys' Track	Varsity
Boys' Golf	Varsity
Cheer Squad	

← 1961 vs Today →

2019
Activity

Level

Volleyball	Varsity
Volleyball	B-Squad
Volleyball	C-Squad
Volleyball	8th grade
Volleyball	7th grade
Football	Varsity
Football	B-Squad
Football	8th grade
Football	7th grade
Cross Country Girls'	Varsity
Cross Country Girls'	Junior High
Cross Country Boys'	Varsity
Cross Country Boys'	Junior High
Girls' Tennis	Varsity
Girls' Tennis	Junior High
Girls' Basketball	Varsity
Girls' Basketball	B-Squad
Girls' Basketball	C-Squad
Girls' Basketball	8th grade
Girls' Basketball	7th grade
Girls' Basketball	6th grade
Girls' Basketball	5th grade
Girls' Basketball	4th grade
Boys' Basketball	Varsity
Boys' Basketball	B-Squad
Boys' Basketball	C-Squad
Boys' Basketball	8th grade
Boys' Basketball	7th grade
Boys' Basketball	6th grade
Boys' Basketball	5th grade
Boys' Basketball	4th grade
Wrestling	Varsity
Wrestling	Junior High
Wrestling	Elementary
Girls' Track	Varsity
Girls' Track	Junior High
Boys' Track	Varsity
Boys' Track	Junior High
Girls' Golf	Varsity
Girls' Golf	Junior High
Boys' Golf	Varsity
Boys' Golf	Junior High
Softball	Varsity
Softball	B-Squad
Softball	Junior High
Baseball	Varsity
Baseball	B-Squad
Baseball	8th grade
Baseball	7th grade
Early Childhood Family Ed.	Family Gym Night
Community Education	Various Activities-Yoga, etc.
JO Volleyball	Varsity
JO Volleyball	B-Squad
JO Volleyball	9th grade
JO Volleyball	Junior High
JO Volleyball	6th grade
JO Volleyball	5th grade
JO Volleyball	4th grade

**EDUCATIONAL
PROGRAMMING
NEEDS**

Here is a side by side comparison between programs offered in 1961 vs. 2019

EXPAND FITNESS/WELLNESS SPACE AND OPPORTUNITIES

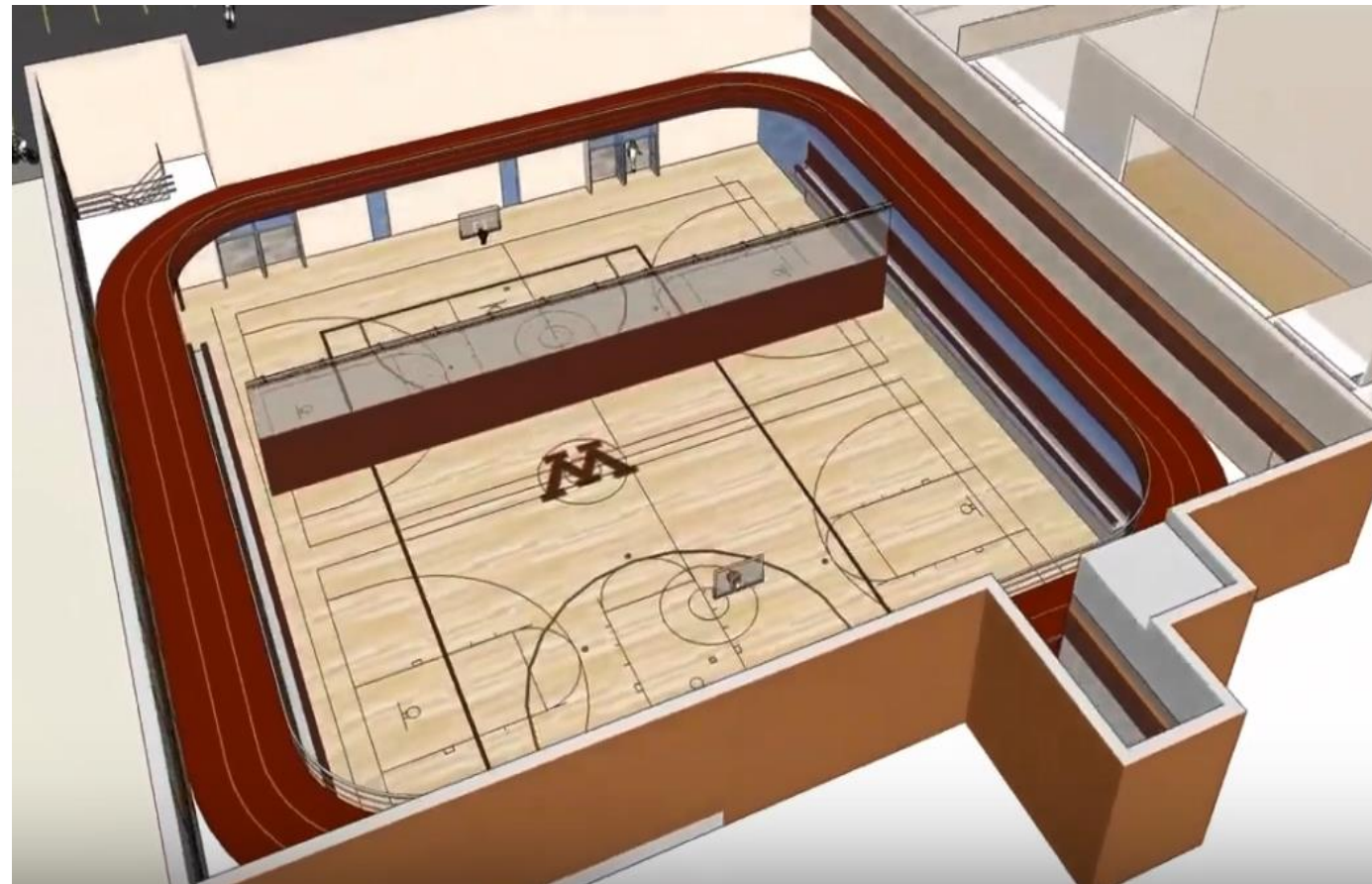
EDUCATIONAL
PROGRAMMING
NEEDS

Expand Fitness/Wellness Space

The school's fitness/weight room does not adequately allow to serve as a teaching station for physical education class and is limited in how many students from an athletic team that can utilize it at one time. The space lacks natural lighting and limits equipment within it. A new, expanded fitness and weight room would allow for cardio equipment (stationary bikes, treadmills, ellipticals) to be added as well as needed space for physical education classes and athletic teams.

EXPAND FITNESS/WELLNESS SPACE AND OPPORTUNITIES

EDUCATIONAL
PROGRAMMING
NEEDS



LOCKER ROOM UPDATES

Update Locker Rooms

The existing locker rooms have plumbing and fixtures that need to be replaced and do not meet current Americans with Disabilities Act (ADA) code requirements. In addition, visiting team locker rooms need to be built.

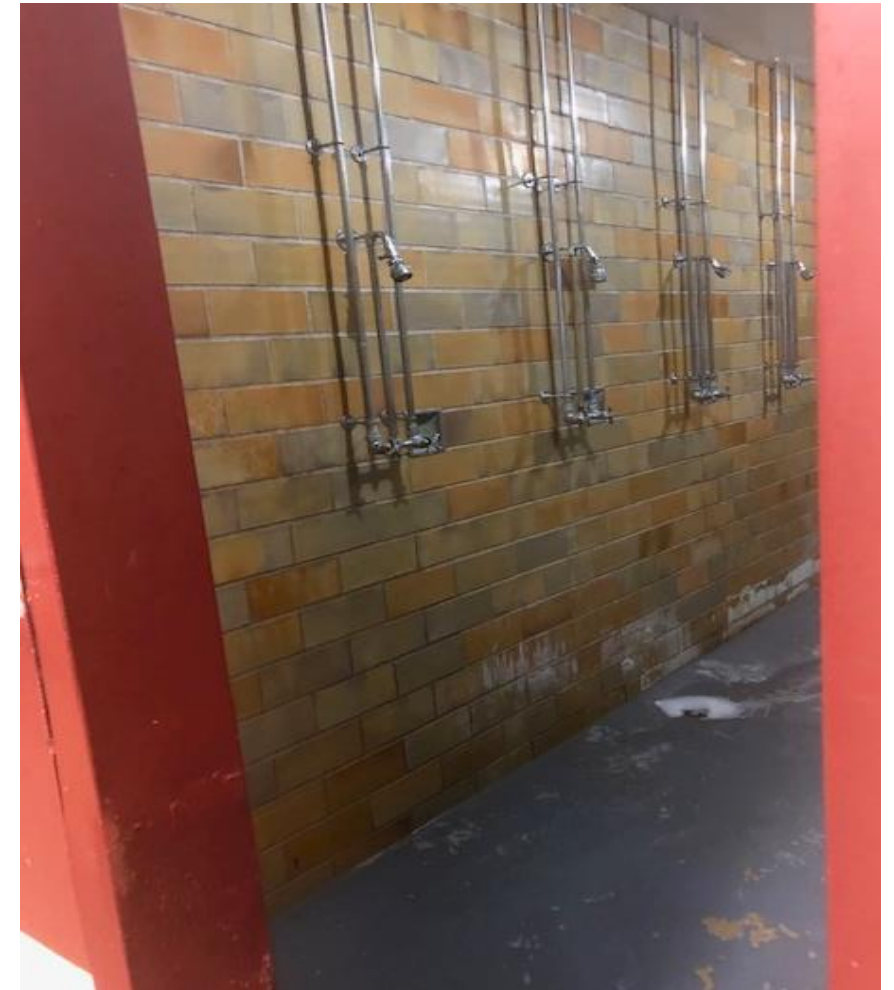
**EDUCATIONAL
PROGRAMMING
NEEDS**



LOCKER ROOM UPDATES

EDUCATIONAL PROGRAMMING NEEDS

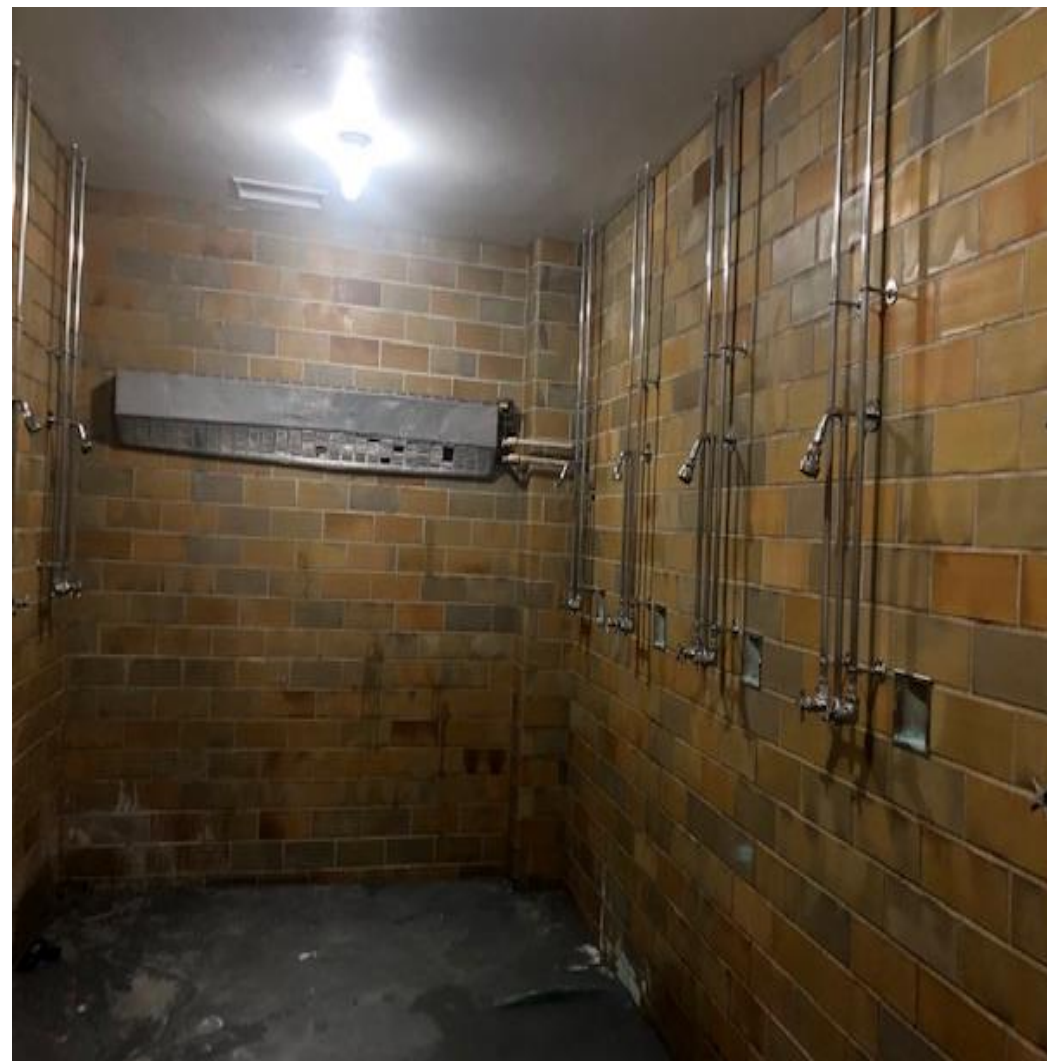
These are actual photos of the high school physical education and varsity team locker room showers. Updating our shower areas are greatly needed. The district has improved the lockers and changing area, but the shower area will need improved ventilation, plumbing fixtures, and wall surfacing. Kids have stated that they would shower more frequently at school, if they were improved.



LOCKER ROOM SHOWERS

EDUCATIONAL
PROGRAMMING
NEEDS

Showers area looking out



CROWDED CAFETERIA

This school cafeteria has served most students that have attended Springfield for the past 50 years. It has been undersized and widely utilized from the onset.

Today, salad bars are offered and have to be located outside of the kitchen, taking away more floor space for seating.

Space provides for cramped conditions and elementary students are cycled through on 20 minute intervals with earliest serving time is 10:45 a.m. and the last lunch ending at 1:00 p.m.

For the cafeteria to physically expand, it would need to push out into the choir classroom. This would create a need to relocate or add a new choir space on campus.



**PROGRAMMING
NEEDS
EDUCATIONAL**



CROWDED CAFETERIA

EDUCATIONAL
PROGRAMMING
NEEDS

Expand the Cafeteria

The cafeteria is used daily and creates difficulties in effectively meeting our student's needs. Due to the lack of seating, lunch is served beginning with kindergartners eating as early as 10:45 a.m. and the oldest students as late as 12:55 p.m. In addition, the cafeteria's current size does not work well for large group activities/instruction nor for use as a community early childhood and parent education gathering space.

The District would like to:

- Build a larger cafeteria that would extend into the adjacent choir room maximizing its' capacity
- Include flexibility in its design to serve as a commons area for student collaboration and studying after school
- Design the space to also be used for large group activities by the school and community



Music Classrooms

EDUCATIONAL
PROGRAMMING
NEEDS

Build New Music Classrooms

The current music classrooms are used for both the elementary and secondary students. For band classes, the teacher has to set-up and take-down equipment multiple times a day.

The district would also repurpose the current band room to serve as large equipment storage that currently has to be stored in a hallway.

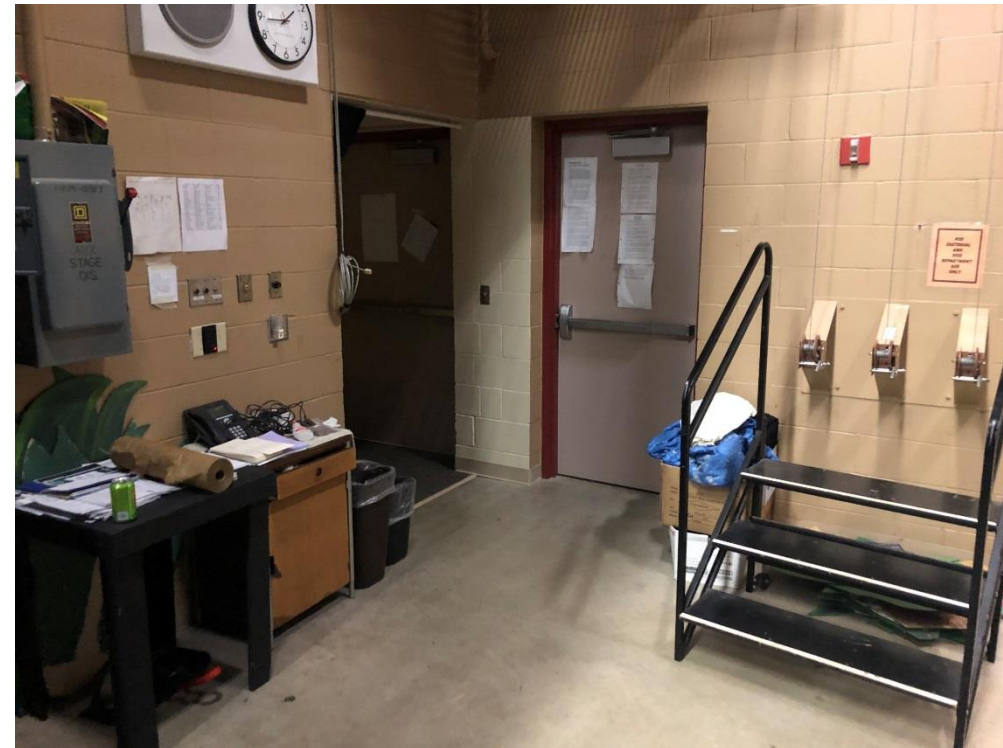
If the cafeteria is expanded, the existing music room could be repurposed into cafeteria space. Then, larger band and music classrooms could be added near the auditorium and include:

- Space designed for general music, choir and band with proper acoustics and flexible seating
- Practice rooms and storage space for instruments and equipment



Theatre Support Space

**EDUCATIONAL
PROGRAMMING
NEEDS**



Theatre Support Space

EDUCATIONAL PROGRAMMING NEEDS

Add Theater Support Space

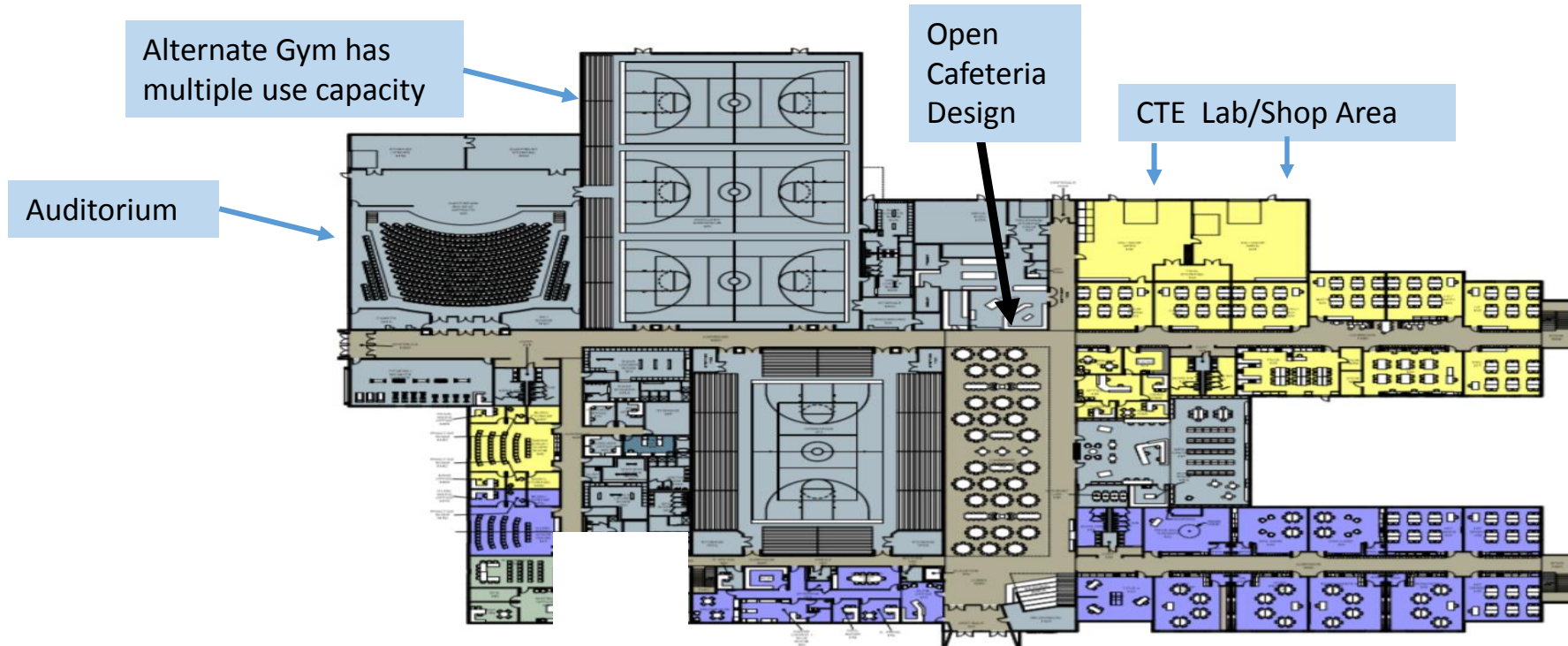
Our auditorium is used by both the school and community. There are a lack of support spaces including storage and dressing rooms. As a result, classrooms are used as make-up stations, dressing rooms, prop storage, etc., impacting classroom space.



New School Designs Used Today address CTE, Gym, and Cafeteria Needs

Here is the design for the new K-12 school. You may notice that the design includes added CTE shop spaces, auditorium, an alternate gym with more than 1 court, 1 main competition gymnasium, and an open cafeteria space that will also be used as a gathering place for community and parent education programming. This design is in response to the programming demands placed upon these spaces .

**EDUCATIONAL
PROGRAMMING
NEEDS**



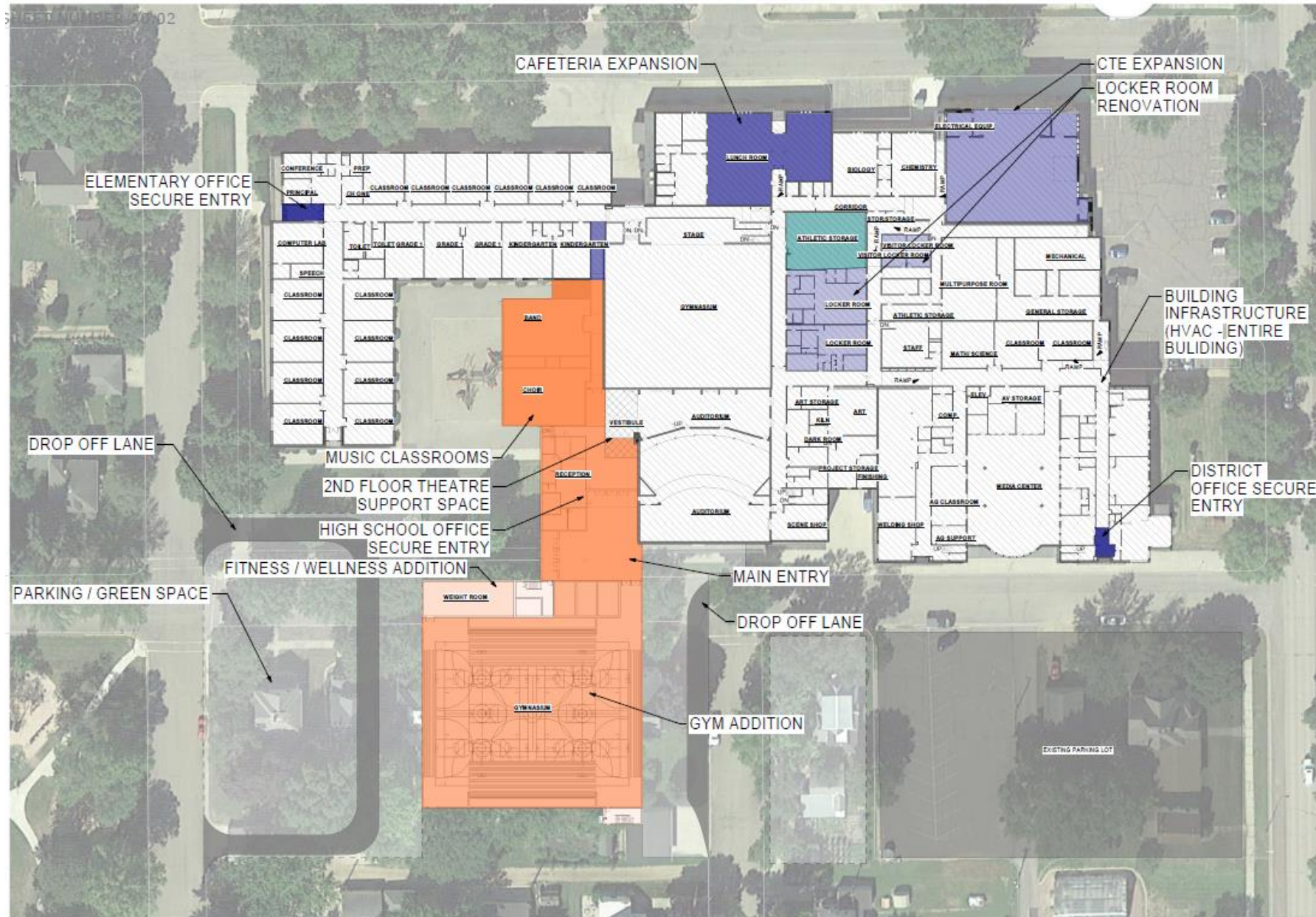
Facility Task Force Recommendation to address Educational, Youth, Early Childhood, and Community Programming Needs

EDUCATIONAL PROGRAMMING NEEDS

*Consensus of this committee is to address the buildings limitations to address these needs by the following:

- a) Repurpose the 1926 Gymnasium to house CTE programming lab/shop space
- b) Add a gymnasium that has twice the capacity of the 1926 gymnasium to better serve the programs provided for students today.
- c) Update the locker rooms and ADA compliance and add a visitor locker area.
- d) Construct a larger fitness/weightroom space and repurpose the old weightroom to serve as the visitor locker room.
- e) Expand Cafeteria size to include the current K-12 Choir room.
- f) Add Choir and Band Room
- g) Include a walking track in a new gymnasium to provide greater community and parent access during the school day, afterschool, and even while the gym may be used by other programs.
- h) Add Theatre Support Space

School Site Plan Addressing Educational Programming Needs.



Category	Area / Item	Area (SF)	Unit Cost (\$/SF)	Total Cost (\$)
RENOVATION	LOCKER ROOM RENOVATION	4,287	\$173	\$741,651
	CAFETERIA EXPANSION	4,147	\$173	\$717,431
ADDITION	GYM ADDITION	20,285	\$350	\$7,099,750
	MUSIC CLASSROOMS	6,209	\$350	\$2,173,150
REPURPOSE - NO COST	2ND FLOOR WALKING TRACK	3,793	\$350	\$1,327,550
	2ND FLOOR THEATRE SUPPORT SPACE	1,000	\$350	\$350,000
COSTS	BUILDING INFRASTRUCTURE (HVAC)	160,000	\$42	\$6,720,000
	LAND + STREET	-	-	\$1,330,413
SAFETY & SECURITY	SECURE ENTRY (Elementary)	523	\$173	\$90,479
	SECURE ENTRY (District Office)	1,541	\$350	\$539,350
FITNESS / WELLNESS	ADDITION	1,541	\$350	\$539,350
	ADDITION	20,285	\$350	\$7,099,750
CTE EXPANSION	EXPANSION	6,590	\$173	\$1,140,070
	ADDITION	6,209	\$350	\$2,173,150
H.S. OFFICES / MAIN ENTRY	ADDITION	6,562	\$350	\$2,296,700
	ADDITION	385	\$173	\$66,605
TOTAL	TOTAL	-	-	\$24,593,149

Springfield School District



If you have any questions, please don't hesitate to contact:

Keith Kottke

Superintendent

507-723-4283

keith.kottke@springfield.mntm.org